

JDI屏幕+LB551调试使用说明

概述

该文档使用硬件：

SiFli LB551核心板+EI_LB55XXXXXX001_V1.1底板+JDI屏幕(JDI387A)

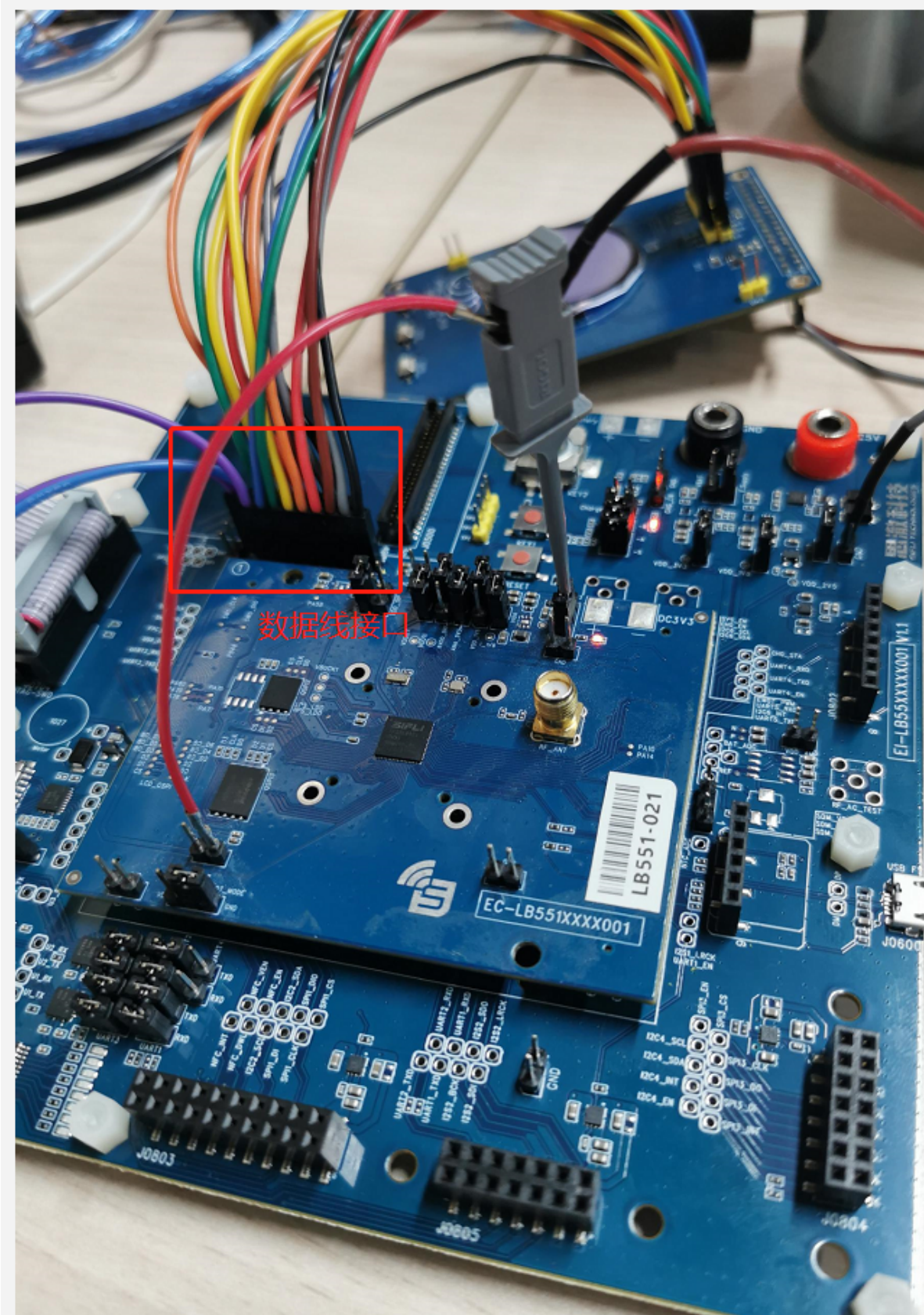
Jlink调试器

使用的软件：

SiFli SDK V1.0.4版本以及相关的开发环境

硬件

数据线连线



数据线接口

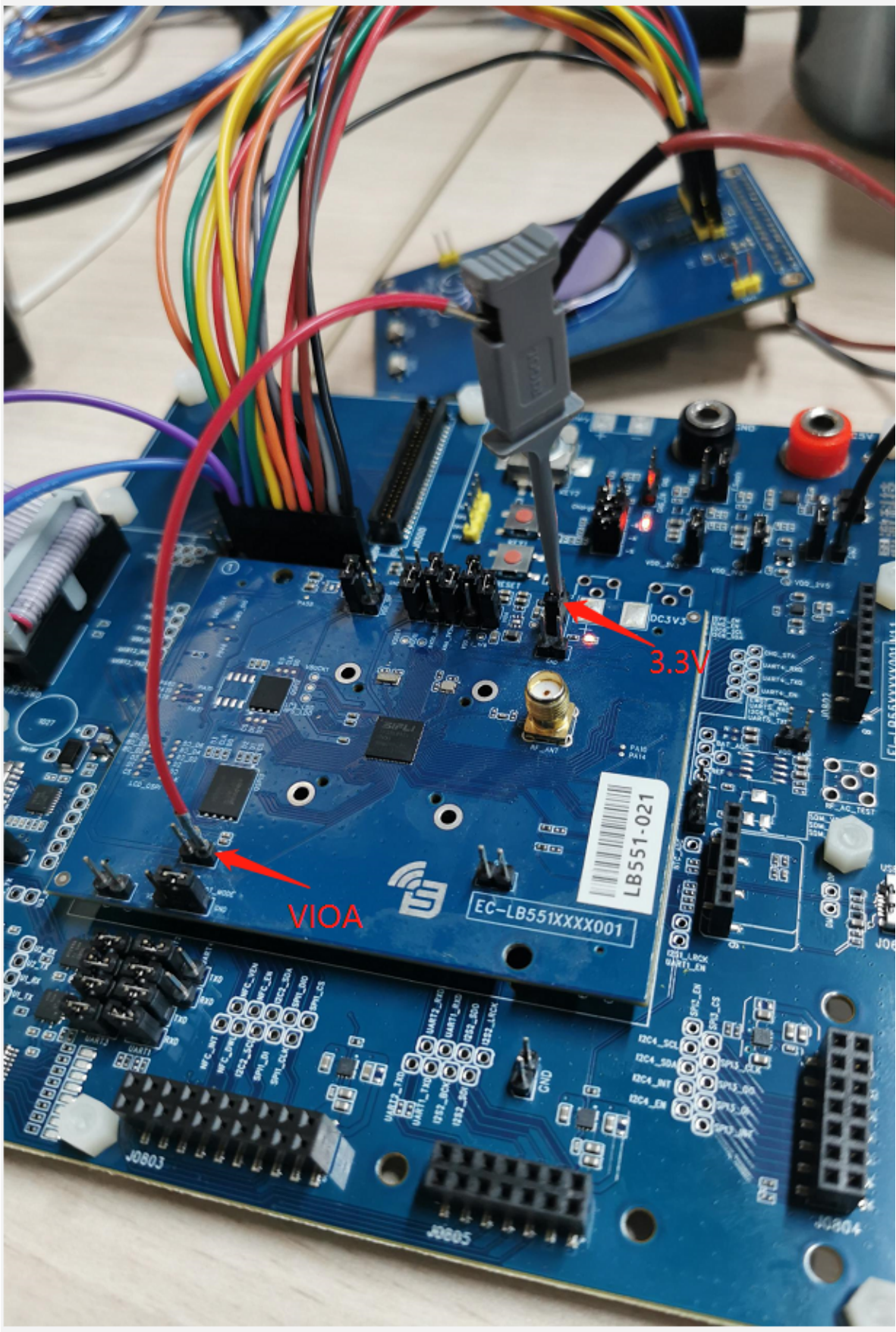
Function 0	V1.1底板管脚丝印	JDI
GPIO_A51	D6	R2
GPIO_A47	D4	VCOM
GPIO_A44	D2	FRP
GPIO_A38	QD2	HST
GPIO_A20	CLK	VCK
GPIO_A34	QD0	XRST
GPIO_A77	TE	G2
GPIO_A79	EN	B2

Function 0	V1.1底板管脚丝印	JDI
GPIO_A55	D7	G1
GPIO_A49	D5	R1
GPIO_A45	D3	XFRP
GPIO_A42	QD3	ENB
GPIO_A31	CS	VST
GPIO_A36	QD1	HCK
GPIO_A78	RST	B1

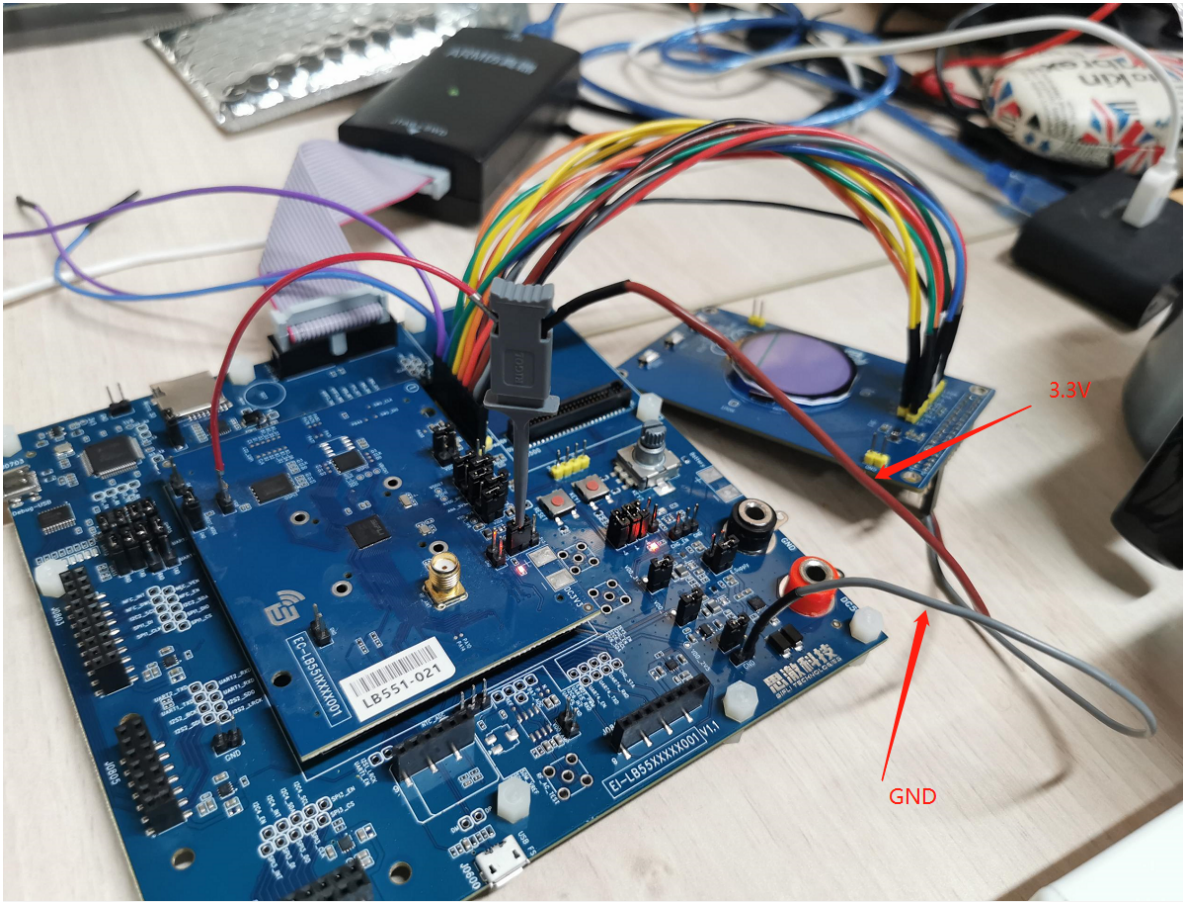
电源

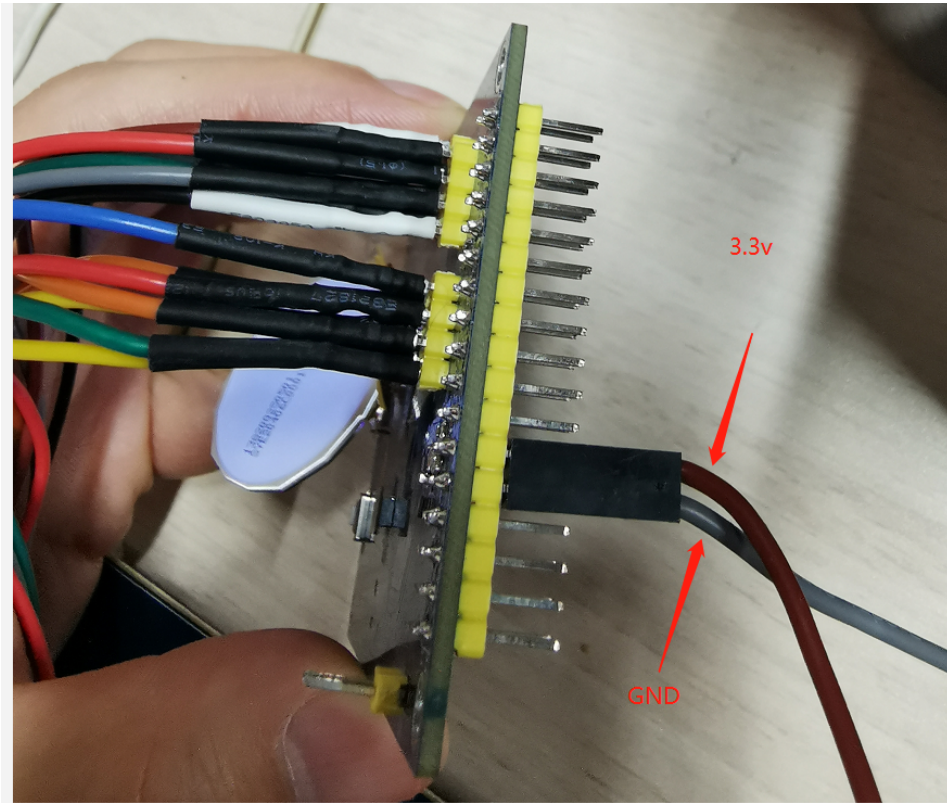
开发板的VIOA电平改为3.3V

(因为这边用到的JDI接口是3.3V)



屏幕电源





软件

有2个工程可供调试：

rt_driver工程 - 用来调试屏幕触控的一个简单工程

watch_demo工程 - 该工程是手表方案的一个示例工程，较复杂

跑rt_driver工程

工程路径

SiFli_Release_V1.0.4\example\rt_driver\project\ec-lb551

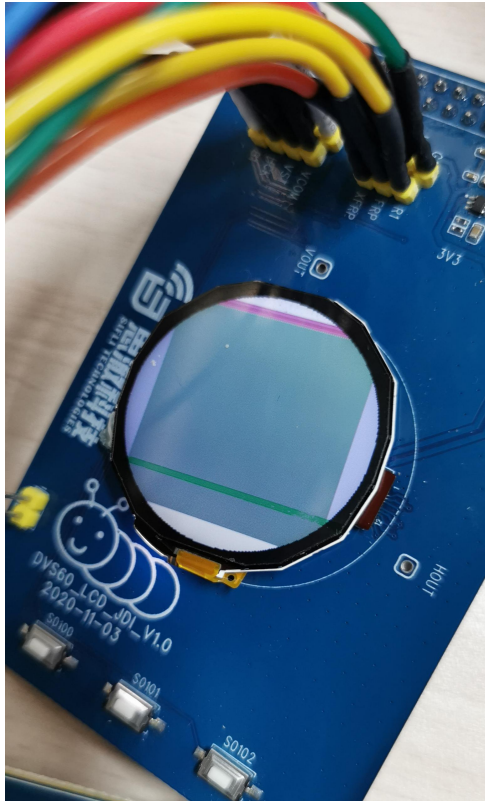
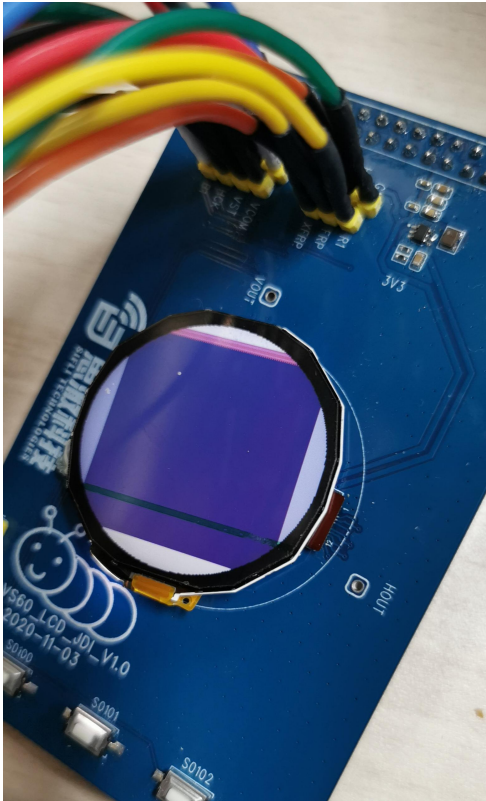
menuconfig配置

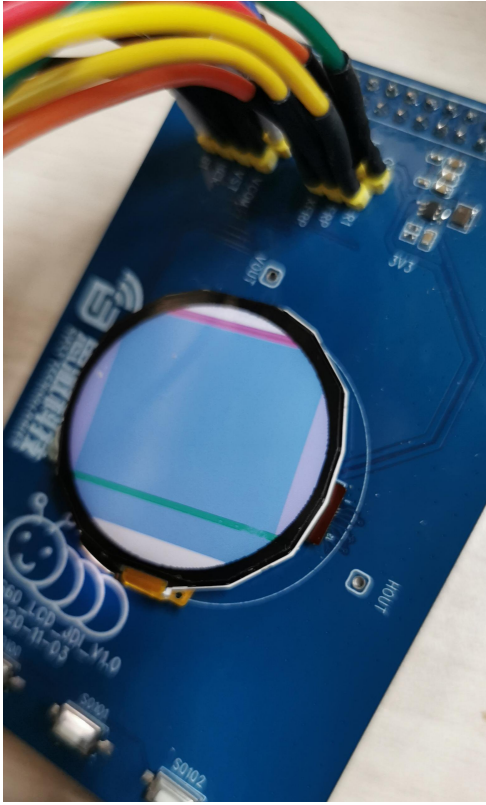
```
cmd - menuconfig
<1> cmd - menuconf
Search
(Top) → Select board peripherals→ Select LCD
Sifli Configuration
( ) 1.78 rect QAD-SPI LCD(ED-LB55DSI17801)
( ) 1.78 rect QAD-SPI LCD(ED-LB55SPI17801)
( ) 1.72 rect QAD-SPI LCD(ED-LB55SPI17201)
( ) 1.78 rect QAD-SPI ramless LCD ST77903(Test only)
(X) 1.2 round JDI LCD(Test only)
( ) RECT SPI LCDED-LB55QADSPI17801(Green)
( ) 1.77 rect QAD-SPI LCD(ED-LB55SPI17701)

↓↓↓↓↓↓↓↓↓↓↓↓↓↓
[Space/Enter] Toggle/enter  [ESC] Leave menu      [S] Save
[O] Load                [?] Symbol info      [/] Jump to symbol
[F] Toggle show-help mode  [C] Toggle show-name mode  [A] Toggle show-all mode
[Q] Quit (prompts for save) [D] Save minimal config (advanced)

menuconfig.exe*[64]:16152  < 180206[64] 1/1 [+ ] NUM PRI 131x28 (19,24)
```

效果图





跑watch_demo工程

工程路径

SiFli_Release_V1.0.4\example\watch_demo\project\ec-lb551

menuconfig配置


```
cmd - menuconfig
<1> cmd - menuconf
Search
(Top) -> Select board peripherals->> Select LCD
Sifli Configuration
( ) 1.78 rect QAD-SPI LCD(ED-LB55DSI17801)
( ) 1.78 rect QAD-SPI LCD(ED-LB55SPI17801)
( ) 1.72 rect QAD-SPI LCD(ED-LB55SPI17201)
( ) 1.78 rect QAD-SPI ramless LCD ST77903(Test only)
(X) 1.2 round JDI LCD(Test only)
( ) RECT SPI LCDED-LB55QADSPI17801(Green)
( ) 1.77 rect QAD-SPI LCD(ED-LB55SPI17701)

↓↓↓↓↓↓↓↓↓↓↓↓↓↓↓
[Space/Enter] Toggle/enter  [ESC] Leave menu          [S] Save
[O] Load                    [?] Symbol info          [/] Jump to symbol
[F] Toggle show-help mode  [C] Toggle show-name mode [A] Toggle show-all mode
[Q] Quit (prompts for save) [D] Save minimal config (advanced)

menuconfig.exe*[64]:16152 180206[64] 1/1 [+] NUM PRI 131x28 (19,24)
```

```
cmd - menuconfig
<1> cmd - menuconf <2> cmd
Search
.config - Sifli Configuration
Third party packages -> LittlevGL2RTT: The LittlevGL gui lib adapter RT-Thread -> LittlevGL2RTT Options
LittlevGL2RTT Options
Arrow keys navigate the menu. <Enter> selects submenu ---> (or empty submenu ----). Highlighted letters are hotkeys. Pressing
<Y> includes, <N> excludes, <M> modularizes features. Press <Esc><Esc> to exit, <?> for Help, </> for Search. Legend: [*] built-in
[ ] excluded <M> module < > module capable

Memory management mode (dynamic) --->
color depth (16bit) --->
(240) horizontal pixels
(240) vertical pixels
(150) DPI(dot per inch)
(0) 16bit color swap
[*] 240 Frame Buffer Line Number
GPU Configuration (enable GPU) --->
Frame Buffer Scheme (Scheme 0, one screen sized buffer + compressed frame buffer for LCD) --->
[*] Use on-the-fly ezip decoder

<select> < Exit > < Help > < Save > < Load >

kconfig-mconf.exe*[32]:16192 180206[64] 1/2 [+] NUM PRI 143x28 (38,15) 50V 16480 100%
```

修改代码关闭PSRAM framebuffer

